



BOY SCOUTS OF AMERICA

Cub World



CUB WORLD

PASCOAG, RI
Est. 1997

Leaders' Guide



Welcome to Cub World!

Founded in 1997 as a Cub Scout resident camp, Feinstein Youth Camp is situated on 1800 acres of untouched wilderness on the Buck Hill Scout Reservation in Burrillville, RI, close to the Connecticut and Massachusetts borders. Cub World is divided into three theme areas: Pease High Seas Adventure, Bridgeton Castle, and Old West Adventure. Each area has its own traditions, songs, and way of bringing our imaginations to reality. Strict standards regarding health, safety, and cleanliness are maintained.



Basic Information

Address, Phone Number, and Contacts

Camp Office – Summer

Cub World
704 Buck Hill Rd.
Pascoag, RI 02859
Office: (401) 567-4470
FAX: (401) 568-2575
Official website: www.cubworld.org

Administrative Offices – Off-Season

Narragansett Council, BSA
P.O. Box 14777
East Providence, RI 02914
(401) 351-8700 x309
FAX (401) 351-5515
E-mail: cubworld@narragansettbsa.org

Directions to Cub World

From RI: Take Rt. 295 to exit 7B, Route 44 West in Greenville. Take Route 44 West to Route 100 North in Chepachet. Take Route 100 North through Pascoag until you see large green highway sign marking nearby CT Route 12. At that sign, take a left onto Buck Hill Rd. After the state firewatch tower, take a left into Feinstein Youth Camp.

From Southeastern MA: Take 195 West to Providence to Route 6 West to Route 295 North. See RI directions above.

From the Mass. Pike: Take Exit 10 to Rt. 290 to Rt. 395 South. Take exit 100 toward East Thompson. Turn left onto Wilsonville Rd. Turn right onto Rt. 193. Turn left onto Porter Plain Rd. Turn right onto Sand Dam Rd. which becomes East Thompson Rd. Turn left onto Quaddick Town Farm Rd. Turn left onto Buck Hill Rd. Take a right into Feinstein Youth Camp.



From Greater Hartford: Take Rt. 84 to the Mass. Pike. See directions above.

From Southeastern CT: Take Rt. 395 North to Exit 99 toward North Grosvenordale and keep right. Turn right onto Rt. 200 and left onto Rt. 193. Stay straight onto East Thompson Rd. Turn right onto Spicer Rd. Turn left onto Quaddick Town Farm Rd. Turn right onto Buck Hill Rd. Take a right into Feinstein Youth Camp.

Air Travel - Air Service to Cub World is out of T.F. Green Airport (PVD) which serves the Providence area. The camp is almost an hour from the airport, a 30 mile distance. Packs should arrange for flights on the first day of camp arriving in Providence no later than 12:30pm. You should arrange for your flight departing Providence on the last day of camp to be the last flight out. <http://www.pvdairport.com/>

Uniform - After 5:00pm, we ask that everyone wear their Class A uniforms for the flag lowering ceremony and the evening meal

Visitors – Other family and visitors are encouraged to come to camp after 12:00 pm on the last day for our Family Picnic and Closing Campfire, as well as to see our Scouts in action. When you arrive you can check in at the office to purchase your bracelet for the family picnic at 12:30. After the picnic the family is encouraged to take part in the afternoon program with their son. We request that parents not participating in the program do not visit at other times. In the event that there is an adult staying for a portion of the session, they will be charged a pro-rated fee; they must also submit a valid medical form. All visitors must check in and out at the Nicholson Administration Building and must wear a visitor's pass.

Non-Discrimination Policy - The programs of the Narragansett Council are available to all children and youth without regard to race, color, religion, disability, age, or national origin. Our programs at Cub World are available to all registered Cub Scouts.

Camp Administration

The Camp Director and the Program Director oversee the entire Cub World operation and are ultimately responsible for everyone in camp. There are specific directors for each theme area, program area, camp services, and medical aspects of the operation. We have a full time, year-round, resident Ranger Staff led by our Reservation Superintendent to maintain our camps. These Key Staff are responsible for:

- The health, safety, and welfare of all individuals in camp.
- Promoting a positive environment in which packs, dens, and Cub Scouts can realize their objectives in coming to camp while making full use of Cub World's resources and facilities.
- Applying their personal abilities and leadership skills so that an active, growth-oriented, fun program takes place in camp.

The Camp Director, Program Director, and the Rangers are all certified by the Boy Scouts of America's National Camp School. The staff is personally trained by the camp and program directors in an intensive weeklong team development experience. Many of our managers are certified and trained specifically for their positions and responsibilities, more than half of our staff is adults, and high competition for placement on our staff allows us the opportunity to be selective and we are very proud to have the best and the brightest Boy Scouts and Venturers on our youth staff.

Cub World's Resources

Staff

Our staff can help you with any and all administrative issues at the Nicholson Administration Building.

Mail – We send and receive mail every day at Cub World via our ranger staff. Outgoing mail can be handed in at the administration building. Incoming mail is distributed to the theme area directors. Due to the short stay at Cub World, and the many stops that incoming mail goes through coming into Pascoag and the camp administration, it is advisable to send mail to your cub scouts a couple days prior to their departure from home.

Mail should be addressed to:

Scout's name

Pack number and community

Theme Area and Session number

Feinstein Youth Camp

704 Buck Hill Rd.

Pascoag, RI 02859

Phone Calls – We do not have phones for public usage, and ask you to use a cell phone in your theme area or the parking lot. Incoming calls to camp will have a message taken and passed onto your theme area director. Urgent messages will be hand delivered by our staff.

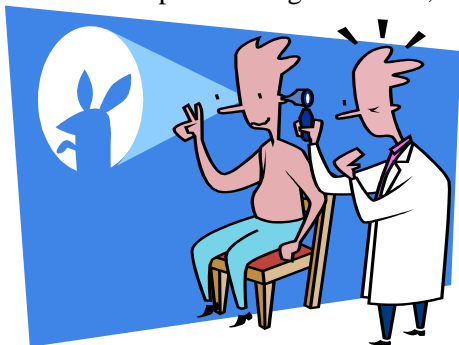
Food Services

The epicenter of Cub World's culinary extravaganza is the Levy Dining Hall. Seated 8 per table, we serve our meal buffet style. Each Cub Scout at the table gets at least one meal to serve as the waiter, and should be assisted by an adult at the table. Duties include arriving 15 minutes early to the meal, to set up the table, going to and from the slides during the meal to get the food and return dishes, and staying to clean up the table. The menu is reviewed by a registered dietician before the summer season.

Special Diets – Our kitchen staff can arrange for special diets, vegetarian, kosher, non-peanut, or celiac if needed. Be sure to make arrangements with the cook at least 16 days in advance by using the Special Diet Request Form.

Medical Services

We have a certified health care provider who lives at the Nicholson Administration Building and is always available through staff intercommunication. In an emergency, Pascoag Fire Department can be at camp within eight minutes, and can emergency transport to Landmark Medical Center.



We are prepared for emergencies 24 hours a day. All injuries and illnesses MUST be reported to the Health Officer.

Health Forms – Every Cub Scout and adult coming to Cub World must have a Class 1 Health Form upon arrival. Health forms and a pack roster, unless updated online, must be provided upon check-in. The health form must be filled out completely including parents' signature, Health and Restriction information, Health Insurance information, Vaccination information, and Medications.

Medications – All medications need to be checked in with the Health Officer during check in, all prescription drugs, including those needing refrigeration, must be presented to the health officer. With authorization from the health officer, limited amounts of medications requiring immediate use in an emergency such as an epi-pen, emergency inhaler, or emergency heart medication may be carried by an adult, staff member, or camper. All other medication is to be secured at the health office, and the adult and theme area staff must see that that camper reports to the health officer at specified times to take the medication. Medications brought to camp **MUST** be in their original containers. Medications can be picked up upon departure following the closing campfire.

Sick Call – Regular Sick Call hours are immediately following breakfast (8:30am) and supper (6:30pm). Please help us by following this schedule.

Housing Arrangements

Separate sleeping facilities are provided for men and women. In the theme areas, buildings are designated as being for fathers and sons, or for mothers and sons. Cub Scouts attending without a parent will be housed in the third building if vacant or with the fathers and sons if the third building is not vacant. Please cooperate with your resident area director when you are being assigned your sleeping accommodations. Adults need to respect the privacy of youth members in situations such as changing for swimming or for bed. They also need to protect their own privacy in similar situations.

Sanitary Facilities

Each theme area and the pool has independent assigned rest rooms for Cub Scouts, Men, and Women equipped with flush toilets, soap, and paper towels. Please encourage your Cub Scouts to wash their hands before each meal. The three theme areas and the pool for Webelos Woods have independent shower facilities for Men and Women. These are for adults only. The pool has separate shower facilities for all youth and youth staff, and is for youth only. Our Pool Staffs clean and stock all of our facilities daily.

Cracker-barrel/Leaders Meeting

On the first night at 9:30 PM, there is an adult crackerbarrel, an opportunity to gather with all the other adults in camp and catch up on old times over coffee, bug juice, and an assortment of late-night munchies foods. This provides an opportunity for the Camp Director and other key staff to meet with all adults in camp to explain some housekeeping items, rules, and answer any questions you and others may have.

Safe Swim Defense

Adults can get certified in Safe Swim Defense with a short course with our Aquatics Director on Day #2 during Siesta at the Nicholson Administration Building. Here you will learn the essential 8 steps in conducting a safe pack swim of your own.

Religious Service

Cub Scouts promise to do their Duty to God. We are working hard to be able to provide services as we have in the past. We will be moving services to prior to the Campfire on your last night of camp, to accommodate changes in the schedule.



Pictures

Theme Area Photos are included in the youth fees. Each Scout will receive one photo.

Lost and Found – Located in the Administration Building.

Clean Sweep Award:

This award will be presented at lunch for the cleanest theme area. Each group is responsible for organizing their pack to clean their area. You will be able to keep the Clean Sweep Award with your area for 24 hours, when it is awarded to another group.

Theme Spirit Award:

This award will be presented during the closing campfire to the theme area that exhibits the most spirit through out the session. *Costumes, Theme Decorations, and anything else is encouraged!*

Leaders' Pre-Camp Checklist

- All payments and an accurate roster are turned in to Narragansett Council by July 1, 2008. Bring receipts, campership information, and Meds to check-in.
- Obtain all completed health forms prior to camp and make a copy for your pack's records.
- All parents have the camp's phone number and address for mailing and emergencies.
- Ensure that each cub and adult is properly equipped. Discourage people from coming over-equipped. Have people put their names on their gear.
- Confirm the number of visitors coming for the Family Picnic. Cost is \$8 per adult and \$4.00 for children 3-12 with ticket reservations paid for at check-in.
- Have a list of parents' phone numbers in case of an emergency.
- Know what theme area and what session your pack will reserve at check-in and have your site deposit.

Arrival at Camp

Arrival Time is between 2:00pm. Please plan to carpool and arrive as a pack. Please remain in the parking lot until the camp opens at 2:00pm. At 2:00pm your theme area's assistant director will greet you and other staff will assist you.



Check-In Procedure – There will be a designated place for your gear, and our staff will transport it all to your theme area for you. Your participants will report to your theme area staff awaiting you. Adults can check your pack, den, or Cub Scouts in at 2:00pm at the Nicholson Administration Building. Have a roster of those in camp, payment information including receipts and campership information, health forms, insurance information, medications and Family Picnic ticket reservations. Starting at 3:00pm, your theme area directors will take you on a tour of camp including a stay at the pool.

Reserving For Next Year

Upon check-in at camp, your pack may reserve up to 110% of your current attendance for the upcoming year in any theme area in the same session or earlier, for a non-refundable \$50 site deposit. First come, first served. You may roll over this summer's site deposit for next summer. \$50 per person is due on March 1st.

Reservations for next summer for packs not in camp this summer may be made after September 1st at the Narragansett Council main office.

Adult Leadership in camp

Ratio – The ratio of adults to cub scouts at Cub World is 1 adult for every 4 cub scouts. Many packs set their ratio higher as a pack rule, some one to one, and some one to two. On average, we are likely to see four adults for every five boys in camp. Although adults are mostly mothers and fathers, Cub World is a great opportunity for grandparents, uncles, aunts, or stepparents to bond closer with the Cub Scout and together enjoy a great, fun, and exciting time at camp!

Example – It's no secret that the cub scouts look up to the adults at Cub World, and not just their own parents. It is of the utmost importance that we strive to set a good example in our conduct, our language, and our habits. Take care when speaking not to use profanity. If you smoke, the smoking area is in the back of the parking lot. The parking lot is the only place where smoking is allowed in camp. Remember, there is always a Cub Scout watching you! Adults are encouraged to participate fully in all activities.

Uniform – The Scout uniform is one of the methods of Scouting. At Cub World, we encourage all cub scouts and adult leaders to show their pride in the Scouting program by wearing their uniform. Class A uniforms are worn to every dinner meal and for the closing show.

Taps – At 9:30pm every evening, the bugler's call tells us that the day is done, and it is time for rest. We ask that all adults join with the staff in ensuring that our cub scouts are bedded down for the night and quiet at 9:30pm. We ask that all adults respect a 10:30pm taps to be rested to be prepared to keep up with the boys the following day while enjoying all the fun of Cub World. The staff is responsible for keeping the camp safe and secure and they do enforce taps.

Dining Hall Conduct – There should be an adult working with the Cub Scout who is the meal's assigned waiter, helping him with the food and clean up. Adults help ensure proper table manners, and respecting the person speaking at the microphone. All participants are expected to sing loudly and proudly in the dining hall.

Emergency Procedures – Our staff has been trained on exactly what to do for fires, lost boys, severe storms, and a variety of other emergency conditions. A mobilization drill is held on Day #1 at 7:00pm. You will be given instructions on what to do by your theme area director. Please treat this mobilization drill seriously. In the event of a real emergency, it is essential that you assist us by keeping your cub scouts calm and under control. We also ask that you follow instructions, and allow our staff to do their job without obstruction.

Feedback – One of the greatest resources we have is the feedback we receive from the packs that camp with us. After lunch on the last day, you will be given a Comment Sheet, on which you should rate us in every area. We ask that you give the ratings every consideration, as we take

them seriously, read your comments in general staff meetings, and take action on your suggestions if feasible. Also, our staff takes immense pride in their work, and they strive to make your stay as fun and enjoyable as possible; so feel free to offer a bit of praise on the comment sheets to deserving staff members and departments.

General Rules

All of the policies and procedures of the Boy Scouts of America and Narragansett Council are in effect and enforced at Cub World. Please remember that in everything that you do with boys other than your own son, two-deep leadership is required.

Unacceptables – There are certain things not allowed at Cub World, including: Pets, Alcohol or drugs, Mini-bikes or personal bicycles, skateboards, smoking except in designated area, Cell Phones (Cub Scouts).

Accountability – Your theme area director should know where every participant is at all times. Please make sure that you notify your theme area director if any adults and/or cub scouts are leaving the group for any reason.

Pond use – Swimming is allowed only in our pool under the supervision of our staff. Unauthorized use of the bodies of water at any time is grounds for ejection from the camp.

Chemical Fuels – There is no need for chemical fuels! The use of liquid fuels for starting any type of fire is prohibited. No flames in tents.

Personal Equipment – Except for fishing equipment, we cannot allow participants to use their own program equipment in camp. This includes firearms, ammunition, archery equipment, and personal watercraft.

Leaving Camp – If a participant must leave camp, they are to first check out with their theme area director, and then at the Nicholson Administration Building. This is always the case, even if one is planning to return to camp. Proper identification is required of the person the Cub Scout is leaving with.

Vehicles – No vehicles are allowed beyond the parking lot, except for authorized camp vehicles operated by camp staff. Adults or cub scouts with special needs should make arrangements with the camp director at least one week in advance. Although the staff routinely patrols the parking lot, all vehicles are parked at the owners' own risk.

Air Conditioners/Electronic Devices- these are prohibited!

Cub World Daily Schedule: Day 2

	Medieval A	Medieval B	Medieval C	High Seas A	High Seas B	High Seas C	Wild West A	Wild West B	Wild West C
6:30 AM	Polar Bear Club								
6:30 AM	Kitchen Staff Reports								
7:15 AM	Reveille								
7:45 AM	Waiters' Call								
8:00 AM	Flag Raising								
8:00 - 8:30	Breakfast								
8:30 - 9:00	Site Clean-Up/Sick Call								
9:00 - 9:45	Pool	Pool	Pool	BB	Sports	Nature	Boating	Boating	Boating
10:05 - 10:50	Pool/Boats	Pool/Boats	Pool/Boats	Crafts	BB	Sports	Boats/Pool	Boats/Pool	Boats/Pool
11:10- 11:55	Boating	Boating	Boating	Sports	Nature	Sling Shot	Pool	Pool	Pool
12:00 PM	Waiters' Call								
12:15 - 1:00	Lunch								
1:00 - 2:00	Siesta								
2:00 - 2:45	Sports	Nature	Sling Shot	Pool	Pool	Pool	Archery	Crafts	BB
3:05 - 3:50	Nature	Sling Shot	Archery	Pool/Boats	Pool/Boats	Pool/Boats	Crafts	BB	Sports
4:10 - 4:55	Sling Shot	Archery	Crafts	Boating	Boating	Boating	BB	Sports	Nature
5:00 - 5:30	Clean-up for Dinner/Change in to uniform								
5:30 PM	Waiters' Call								
5:45 PM	Colors								
6:00 - 6:30	Dinner								
6:30 - 7:00	Sick Call								
7:00 - 8:00	Field Sports								
8:15 - 9:30	Theme Area Campfire								
9:30 PM	Taps								

Cub World Daily Schedule: Day 3

	Medieval A	Medieval B	Medieval C	High Seas A	High Seas B	High Seas C	Wild West A	Wild West B	Wild West C
6:30 AM	Ultimate Golf at the Cub World Country Club								
6:30 AM	Kitchen Staff Reports								
7:15 AM	Reveille								
7:45 AM	Waiters' Call								
8:00 AM	Flag Raising								
8:00 - 8:30	Breakfast								
8:30 - 9:00	Site Clean-Up/Sick Call								
9:00 - 9:45	Archery	Crafts	BB	Boating	Boating	Boating	Sports	Nature	Sling Shot
10:05 - 10:50	Crafts	BB	Sports	Boats/Pool	Boats/Pool	Boats/Pool	Nature	Sling Shot	Archery
11:10- 11:55	BB	Sports	Nature	Pool	Pool	Pool	Sling Shot	Archery	Crafts
12:00 PM	Waiters' Call								
12:15 - 1:00	Family Picnic								
1:00 - 2:00	Siesta/ pack gear								
2:00 - 2:45	Boating	Boating	Boating	Nature	Sling Shot	Archery	Pool	Pool	Pool
3:05 - 3:50	Boats/Pool	Boats/Pool	Boats/Pool	Sling Shot	Archery	Crafts	Pool/Boats	Pool/Boats	Pool/Boats
4:00	Closing Flag Ceremony								
4:10-4:30	Closing Camp Fire At the Mowgli Amphitheater								

CUB WORLD FOOD SERVICE DEPARTMENT
SPECIAL DIET REQUEST FORM

At Cub World we want your stay with us to be as care-free as possible, even with dietary restrictions of any kind. We recognize the concerns faced with special diets including food allergies, kosher diets, etc. We can accommodate ANY dietary requirements.

For participants with special dietary needs, please fill out the information below, and send it to us at least 16 days prior to your arrival at camp. Feel free to attach a list of foods that can or cannot be eaten, and any other pertinent information. If a participant has a severe condition that requires them to consume a diet of highly specialized foods, we encourage you to provide us with those foods and we will be glad to store and prepare them for you. We ask that all those who submit a form meet with the camp cook immediately after the first meal to ensure that all your needs are known and provided for.

Nut Allergies: The only nut product that Cub World has in its kitchen is peanut butter. It is not used as a hidden ingredient and careful measures are taken to prevent cross contamination. Be advised, the Trading Post has candy bars with nut products in them.

Thank you for your cooperation and see you this summer!

Please complete all necessary information below and mail it to:

Before July 1st:

Cub World Camp Director
Narragansett Council
P.O. Box 14777
East Providence, RI 02914
(401) 351-8700 x326
FAX: (401) 351-5515
cubworld@narragansettbsa.org

After July 1st:

Russ Tavares
Food Service Department
Call Cub World
(401) 567-4470
FAX: (401) 568-2575

CUB WORLD SPECIAL DIET AND KOSHER FEEDING REQUEST

Pack: ___ Community: _____ Session Number: ___ Theme Area: _____

Name: _____ Phone #: _____ Age _____

Dietary Need / Allergy: _____

Kosher Feeding Number of People: _____

Please attach list of foods that Scout or Adult can or cannot eat.

Family Picnic

All family and friends are invited to come to Cub World to visit on the last day of your stay for our family picnic! Arriving around 12:00pm, visitors can pick up their reserved picnic bracelets at the Nicholson Administration Building. At a cost of \$8 for adults and \$4.00 for children 3-12, they are reserved for them ahead of time, at check-in. The Picnic will begin at 12:30. From 2:00-4:00, visitors can take part in the Cub World program with their son! The trading post will be open all afternoon! At 4:15 we have our flag lowering ceremony, followed by the Closing Campfire in the Mowgli Amphitheater!.

What to Bring

- Flashlight
- Swimsuit
- 2 Towels
- Rank Handbook
- Paper and Pens
- Jacket or sweater
- Toothbrush and toothpaste
- Soap in a container and shampoo
- Comb or brush
- Pillow & Sleeping Bag, blankets
- Medication (if needed)
- Uniform and Neckerchief & Slide
- Pajamas
- Health Form
- 2 pair of sneakers
- Pair of pants
- 2 pair of shorts
- Poncho or Raincoat
- 3 sets of underwear
- Aquashoes
- Spending money
- Hat
- Bug repellent/Sun Screen
- Scout Spirit

Optional - Camera, canteen, fishing gear, musical instrument, Bible or prayer book.

Do not bring - Radios, CD players, televisions, electronic games, knives (except in Webelos Woods), firearms, pets, axes, drugs, alcohol, liquid fuels, archery equipment, **opened toed shoes** and frowns.

Please share this with all families in your pack.

Coming Back to Cub World

Come again this year!

Cub World was so much fun, you want to come back again later this summer? That can be arranged! We have as many as seven more sessions at Cub World after you go home. Come back for a second or third session, perhaps in a different theme area, and the fun will never stop! Take advantage of the \$85 fee for cubs for two or more sessions at camp. In the off-season make arrangements at the Narragansett Council office. At camp, see the clerk, or contact the camp by phone. Cub World is the place to be! And be again! And be again!

Provisional Camp!!!

The provisional camp is designed for scouts who cannot attend camp with their parents or pack leaders. This gives every kid an opportunity to come to Cub World and meet new friends! Also, if you attend Cub World with your son for one session he can stay another session at our Provisional for just \$85!! We provide all the leadership! Your son will be put in a den just like in his pack at home. We will have an adult in charge of the Provisional pack as well as a den chief to help them along the way.

Family Camp!!

Well, now the whole family can enjoy in the great fun at Cub World at Family camp during Session 7-8. A family can attend at a flat rate of \$345. Their will be age appropriate activities for the young ones and the older kids. Come on down and join in the fun as a family!!

Come back next year!

Well, almost all packs come back year after year... we hope you will too! Reserve your site for next year with a \$50 site deposit at check-in.

Come back to learn!

At the age of 14, Boy Scouts come to Cub World to participate in our CIT Program. Here they learn to work with cub scouts, parents, and staff, and they help deliver our quality program while gaining valuable leadership experience and skills to take back to their troops.

Come back to teach.

Starting at the age of 15, one can apply for a position on the Cub World Staff. Graduates of the Apprentice Program are first in line to be considered for staff positions. Many of our current youth staff were once campers at Feinstein Youth Camp, and have returned, all grown up, to give back to today's cub scouts and share the magic of Cub World to a new generation. The strong friendships made and the camaraderie we share on staff is difficult to fully express. It is a uniquely positive experience and perhaps your Cub Scout today will become a member of tomorrow's Cub World Staff!

General Advancement Information

At Cub World we provide some unique advancement opportunities. Each Cub Scout parent will be able to find a list of activities on the following pages that are may be completed in camp by participating in our normal program. Please discuss what items are completed while attending camp with your Scouts, each session does offer different opportunities for our Scouts, and are not limited to those below. **BB and Archery Belt Loops** are the only advancement that Cub World will be responsible for giving any recognition.

Volleyball Belt Loop @ High Seas

1. Explain the rules of Volleyball to your leader _____
2. Spend at least 30 minutes practicing and participate in a game. _____

Volleyball Belt Loop Completed

Marbles Belt Loop @ Old West

1. Explain the rules of Ringer to your leader.

2. Spend at least 30 minutes practicing skills to play the game of Ringer. _____
3. Participate in a game of marbles.

Marbles belt loop completed

Chess Belt Loop @ Medieval Castle

1. Identify the chess pieces and set up a chess board for play

2. Demonstrate the moves of each chess piece to your den leader

3. Play the game of chess

Chess Belt Loop Completed

Swimming Belt Loop

1. Explain the rules of Safe Swim Defense. Emphasize the buddy system.

2. Play a game in the water

3. While holding a kick board, propel yourself 25 feet using a flutter kick
Along the width of the pool

Swimming Belt Loop Completed

Nature Belt Loop

1. Make a poster that shows and explains the water cycle

2. Set up a simple weather station to record rainfall, temperature
Air pressure, and evaporation.

3. Discuss weather forecasts that you have seen

Weather Belt loop completed

Wildlife Belt Loop

1. Explain what natural resources are and why it's important to protect
And conserve them

2. Make a poster that shows and explains the food chain. Describe
What happens if the food chain becomes damaged or broken

3. Learn about an endangered species. Explain how species become
Endangered and what is being done to save it.

Wildlife Belt Loop completed

Geology Belt Loop

1. Define Geology

2. Collect a sample of sedimentary, igneous, and metamorphic rock.
Explain how each was formed.

3. Explain the difference between a rock and a mineral

Geology Belt Loop Completed

Fishing Belt Loop

- 1. Review your local fishing regulations. Explain why they are important, and commit to follow them. _____
- 2. Demonstrate how to properly bait a hook. _____
- 3. Try to catch a fish _____

Fishing Belt Loop Completed

Soccer Belt Loop

- 1. Explain the rules of soccer to your leader _____
- 2. Spend at least 30 minutes practicing and participating in a game _____

Soccer Belt Loop Completed

Wolf Electives

20c. Know Archery Safety Rules. Know how to shoot properly. Put four out of six arrows into the target 15 feet.

2a. Help to plan and put on a skit with costumes _____

2b. Make some scenery for a skit _____

2d. Be the announcer for a skit

Bear Electives

20a. Know the archery safety rules and how to shoot correctly.
Put six arrows into a target at 15 feet. Make an arrow holder _____

24d. Tell two people they have done a good job. _____

5e. Know the rules of boating safety _____

NARRAGANSETT COUNCIL BOY SCOUTS OF AMERICA
APPLICATION FOR CAMP SCHOLARSHIP
 PLEASE PRINT

NAME: _____ **TROOP/PACK #:** _____ **COMMUNITY:** _____

ADDRESS: _____ **CITY:** _____ **STATE:** _____ **ZIP:** _____

AGE: _____ **PHONE #:** (____) _____ **RANK:** _____

CAMP ATTENDING:

Boy Scout Resident Camp:

Yawgoog Cachalot Baden Powell at Yawgoog Cadre at Cachalot CIT Corps

Cub Scout Resident Camp: Cub World Adventure Weekends (Yawgoog or Feinstein)

Cub Scout Day Camp: Champlin Aquapaug Colt State Park Cub World Cachalot

FIRST DAY ATTENDING CAMP: _____

The Narragansett Council is not able to totally subsidize the camp fee for a Cub or Scout. Ordinarily, the Scout himself Should help to pay his own way, contributing some portion of the camp fee along with other support that can be provided by family, Troop/Pack, and sponsoring organizations. If this effort is shared by all concerned, there is no reason why every Scout should not have the opportunity to attend summer camp.

PROCEDURE:

- Completely fill out this form and sign as required.
- Indicate below how much support the Family, Unit and Sponsoring Organization will provide. (Check with Unit Leader regarding Pack or Troop Assistance.)
- Have your Cubmaster/Scoutmaster or Committee Chair give approval by signing below.
- Submit the application to Narragansett Council, BSA, PO Box 14777, East Providence, RI 02914.

A decision will be made on camper assistance. Notification will be sent to the leader of the unit (listed above in line 1) and to the parent/guardian of the Scout receiving assistance.

Amount of money Scout/Cub and family can provide	\$ _____
Amount of money Pack/Troop can provide	\$ _____
Amount of money that unit sponsor can provide.....	\$ _____
Amount of money needed for campership	\$ _____

REASON FOR REQUEST FOR CAMPERSHIP *(Must be completed to process):*

ARE YOU OR YOUR SON RECEIVING ANY TYPE OF PUBLIC ASSISTANCE? Yes No

Type: _____

PARENT/GUARDIAN SIGNATURE: _____

SCOUTMASTER/CUBMASTER/COMMITTEE CHAIR APPROVAL: _____

FOR OFFICE USE ONLY	
Verification _____	
Application approved for \$ _____	Disapproved _____ Reason _____
District _____	District Code: _____